

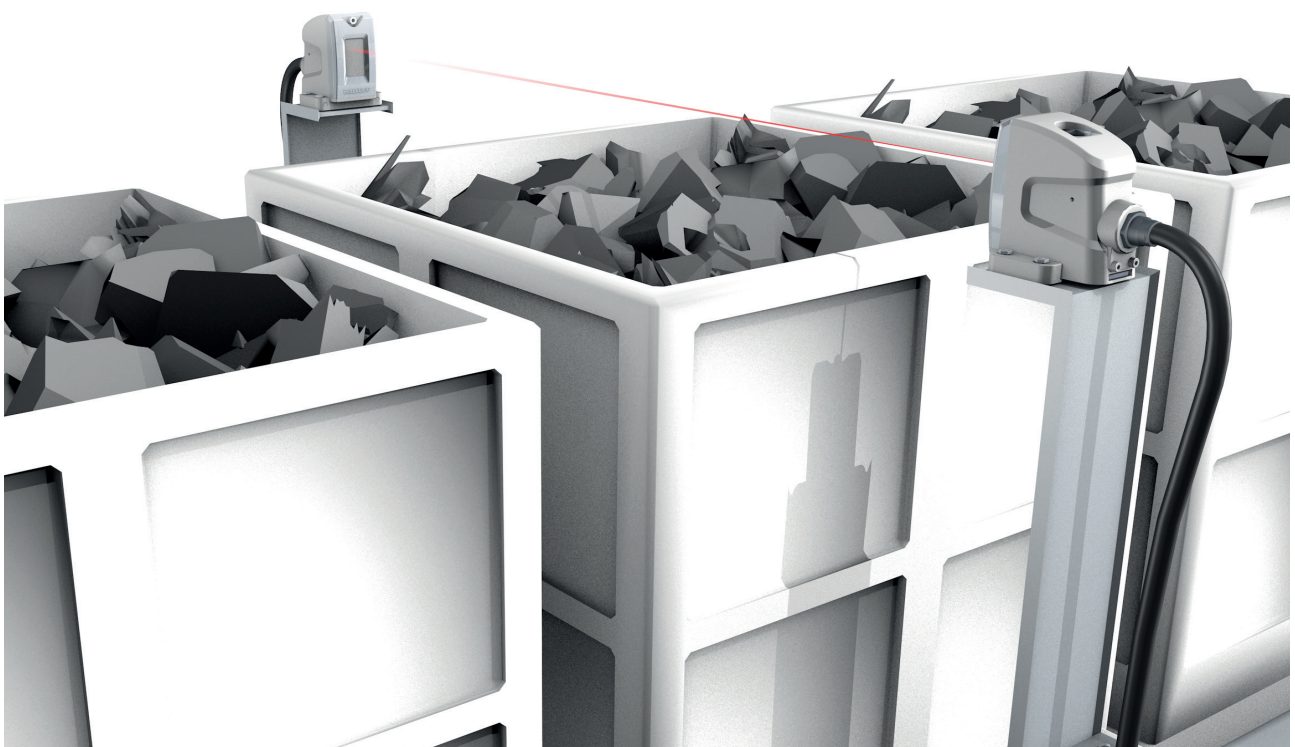
## Protective housing for photoelectric sensors

For use with BOS 23K, BOD 23K and BOS 50K in harsh, extreme conditions

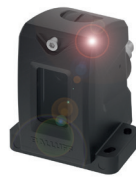
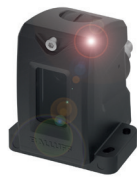
- Mechanical stability
- Chemical and temperature resistance
- Increased service life for reduced maintenance costs
- Contamination protection
- Can be used in welding areas



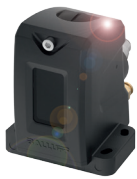
The new BAM protective housing for the BOS 23K, BOD 23K and BOS 50K photoelectric sensors permits them to be used under extreme conditions. Example include in steelworks, in plant construction, in foundries, in special automotive applications, in the wood industry or mining, etc. With the optional water cooler use up to 160 °C is possible. To effectively remove contamination on the cover, an air blow-off is available as an option. The protective cover is available in two sizes from stock, with a PMMA or glass protective pane.



Filling level control of hot foundry scrap



Description	Protective housing for BOS 23K/BOD 23K <b>BAM029M</b>	Protective housing for BOS 23K/BOD 23K <b>BAM029L</b>	Protective housing for BOS 50K <b>BAM02H4</b>	Protective housing for BOS 50K <b>BAM029C</b>
Dimensions	84.1 × 107 × 124.5 mm	84.1 × 107 × 124.5 mm	89.5 × 133 × 135.7 mm	89.5 × 133 × 135.7 mm
Active area	23.5 × 43 mm	23.5 × 43 mm	26 × 74.6 mm	26 × 74.6 mm
Ambient temperature T <sub>a</sub> min.	Cooling not included -5 °C	-5 °C Option with cooling Water 8 °C, 2l/min.: 0 °C	Cooling not included -5 °C	-5 °C Option with cooling Water 8 °C, 2l/min.: 0 °C
Ambient temperature T <sub>a</sub> max.	Cooling not included +90 °C	+90 °C Option with cooling Water 8 °C, 2l/min.: 160 °C	Cooling not included +90 °C	+90 °C Option with cooling Water 8 °C, 2l/min.: 160 °C
Degree of protection as per IEC 60529	IP67	IP67	IP67	IP67
Werkstoff	Housing: Aluminium Optical surface: PMMA	Aluminium Glass ceramic	Aluminium PMMA	Aluminium Glass ceramic
Mounting system	Screw Ø 5	Screw Ø 5	Screw Ø 5	Screw Ø 5



## Accessories

Description	Water connection for protective housing BOS 23K/BOD 23K <b>BAM029K</b>	Water connection for protective housing BOS 50K <b>BAM029P</b>	Air blow-off for protective housing BOS 23K/BOD 23K/BOS 50K <b>BAM029N</b>
Dimensions	45.7 × 70.7 mm	49.7 × 80.7 mm	62 × 21.2 × 17.3 mm
Material	Aluminum	Aluminum	Aluminum



Description	Protective cover for housing BOS 23K/BOD 23K <b>BAM029F</b>	Protective cover for housing BOS 23K/BOD 23K <b>BAM029E</b>	Protective cover for housing BOS 50K <b>BAM029J</b>	Protective cover for housing BOS 50K <b>BAM029H</b>
Dimensions	55 × 96.3 × 20 mm	55 × 96.3 × 20 mm	60 × 122.5 × 22.5 mm	60 × 122.5 × 22.5 mm
Material	Housing: Aluminium Optical surface: PMMA	Aluminum Glass ceramic	Aluminum PMMA	Aluminum Glass ceramic