

Photoelectric Sensor BOS 12M with Background Suppression

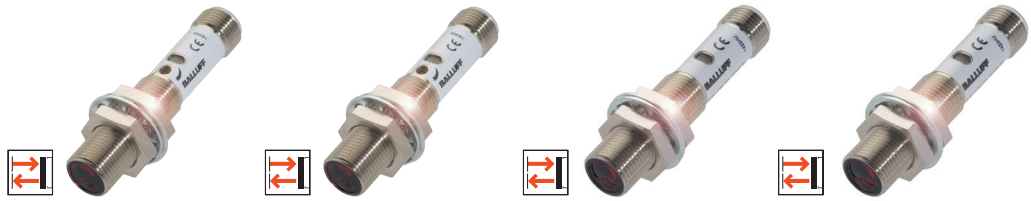
Reliably detect objects regardless of background color

- Long range in a compact form factor
- Rugged M12 metal housing
- Potentiometer for simple, fast setting
- Precise, easily visible red light spot
- Ideal for standard applications



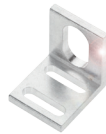
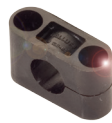
Many industrial applications require reliable detection of objects located close to a background. The BOS 12M diffuse sensor with background suppression handles this challenge with absolute reliability. With a range of up to 100 mm it can be flexibly used in a variety of applications. And its rugged IP67 housing makes it a perfect solution for harsh environments in factory automation. Another plus: A single 12mm hole is all you need to install it. Mounting brackets or other accessories are almost always unnecessary.





Type	Diffuse sensor with adjustable background suppression	Diffuse sensor with adjustable background suppression	Diffuse sensor with background suppression	Diffuse sensor with background suppression
Detection range	25...100 mm	25...100 mm	1...50 mm	1...50 mm
	BOS01ZU	BOS01ZR	BOS01ZT	BOS01ZW
Adjustment	Poti	Poti	Permanently set	Permanently set
Output	2 × PNP	1 × PNP	2 × PNP	1 × PNP
Additional output		Contamination/Error		Contamination/Error
Light type	LED, red light	LED, red light	LED, red light	LED, red light
Light spot diameter	Ø 6 mm at 100 mm	Ø 6 mm at 100 mm	Ø 4 mm at 50 mm	Ø 4 mm at 50 mm
Supply voltage U_S	10...30 V	10...30 V	10...30 V	10...30 V
Switching frequency f	500 Hz	500 Hz	500 Hz	500 Hz
Degree of protection as per IEC 60529	IP67	IP67	IP67	IP67
Ambient temperature T_a	-5...+55 °C	-5...+55 °C	-5...+55 °C	-5...+55 °C
Mate- rial	Housing: Nickel-plated brass Optical surface: PMMA	Housing: Nickel-plated brass Optical surface: PMMA	Housing: Nickel-plated brass Optical surface: PMMA	Housing: Nickel-plated brass Optical surface: PMMA
Connection	M12 connector, 4-pin	M12 connector, 4-pin	M12 connector, 4-pin	M12 connector, 4-pin

Accessories



Description	Mounting cuff	Mounting brackets for sensors and clamps M12
Hole diameter	Ø 12 mm	
	BAM00C4	BAM00C0
Material	PA 6	Anodized aluminum

Connector



Type	2 m cable PUR (black) with M12 connector, 4-pin (straight)	2 m cable PUR (black) with M12 connector, 4-pin (right-angle)
	BCC032F	BCC032Y

Services



Service – You can rely on our support over the entire life cycle of our products and solutions: Including the design and planning of your projects, testing and setup on site, and training and support. For more information, visit us online at www.balluff.de/services

www.balluff.com

Balluff GmbH Schurwaldstrasse 9 73765 Neuhausen a.d.F. Germany Phone +49 7158 173-0 Fax +49 7158 5010 balluff@balluff.de