

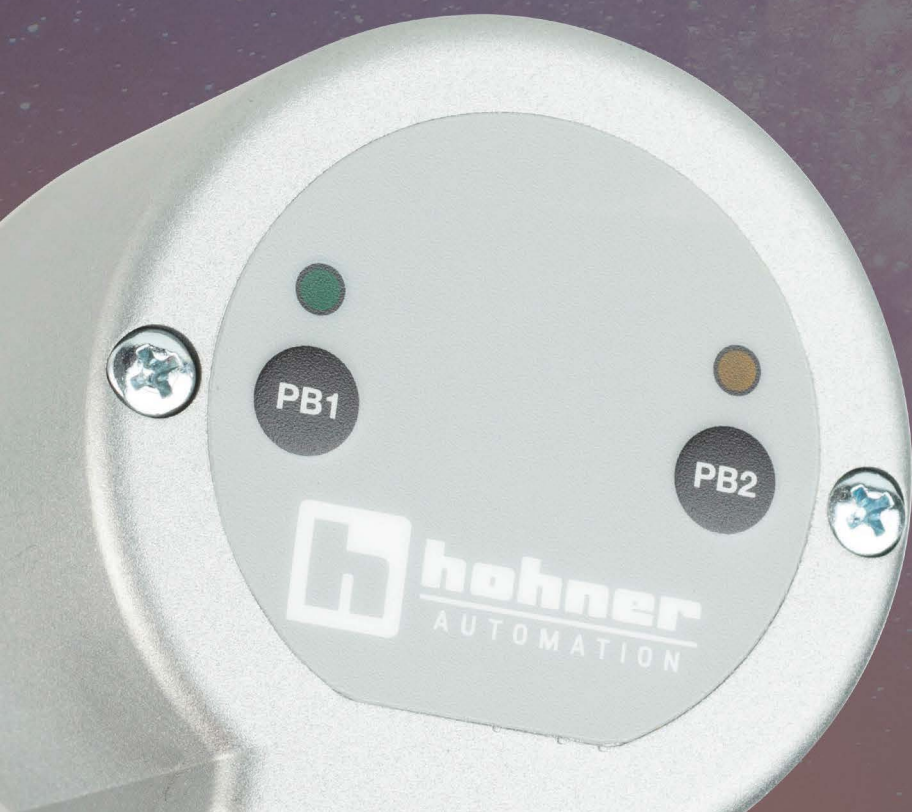


# SINGLETURN & MULTITURN ANALOG ENCODERS

# ENDLESS POSSIBILITIES

---

Serie E24 CS | Serie E24HS | Serie E58 TS | Serie E58 CM | Serie E58 HM



# HOHNER ANALOG ENCODERS

## where simplicity meets versatility



### SINGLETURN



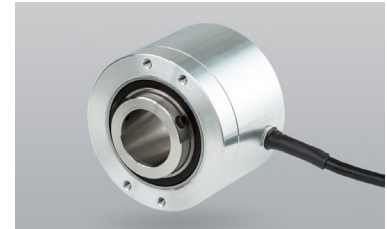
**SERIE E24 CS**

- > Resolution up to 12 bits
- > External diameter 24 mm
- > Solid shaft  $\varnothing$  4 or 6 mm
- > Connection by cable



**SERIE E24 HS**

- > Resolution up to 12 bits
- > External diameter 24 mm
- > Blind hollow shaft  $\varnothing$  6 mm
- > Connection by cable



**SERIE E58 TS**

- > Resolution up to 12 bits
- > External diameter 58 mm
- > Hollow shaft  $\varnothing$  21 mm
- > Connection by cable



### MULTITURN



**SERIE E58 HM**

- > Resolution up to 16 bits
- > Measuring range configurable up to 65.536 turns
- > External diameter 58 mm
- > Blind hollow shaft  $\varnothing$  6 to 12 mm
- > Connection by cable or industrial connector M12



Configurable by buttons or cable



Protection class IP65



Current or Voltage Output



Limit Switch Function



**SERIE E58 CM**

- > Resolution up to 16 bits
- > Measuring range configurable up to 65.536 turns
- > External diameter 58 mm
- > Solid shaft  $\varnothing$  6 to 12 mm
- > Connection by cable or industrial connector M12

