



“ your
encoder
experts

—
since **1983**



| www.encoderhohner.com |



INCREMENTAL ENCODERS

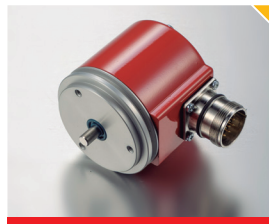
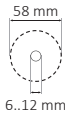
SOLID SHAFT



SERIE 10 / 10A



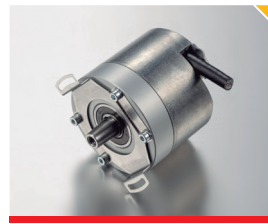
≤ 50.000 ppr
IP65 / IP67
Cable or connector



SERIE 58 / 58S



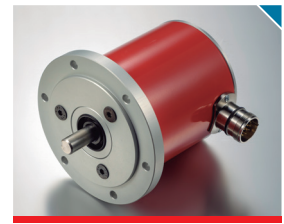
≤ 50.000 ppr / 2.500 ppr
IP65
Cable or connector



SERIE 64 / 64S



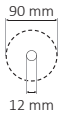
≤ 10.000 ppr / 2.048 ppr
IP54
Cable



SERIE 30 / 30A / 30I



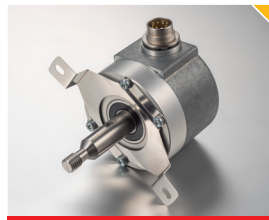
≤ 50.000 ppr
IP65 / IP67
Cable or connector



SERIE 10K INOX



≤ 50.000 ppr
IP69K
Cable



SERIE 66



≤ 50.000 ppr
IP64
Cable or connector



SERIE 67 / 67S



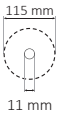
≤ 5.000 ppr
IP66
Cable



SERIE 100 / 100 DUO



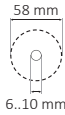
≤ 50.000 ppr
IP66
Cable or connector



SERIE PR90



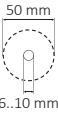
≤ 10.000 ppr
IP65
Cable or connector



SERIE 50



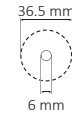
≤ 5.000 ppr
IP65
Cable or connector



SERIE 36



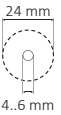
≤ 10.000 ppr
IP65
Cable or connector



SERIE 26 / 27



≤ 4.096 ppr
IP64
Cable



SERIE PR90



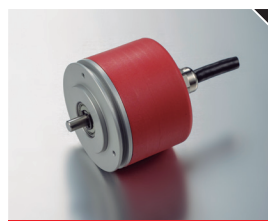
≤ 65.536 ppr
IP65
Cable



SERIE 11



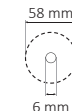
≤ 5.000 ppr
IP65
Cable



SERIE 20



≤ 1.024 ppr
IP54
Cable



SERIE 21



≤ 500 ppr
IP41
Cable



ⓘ RANGE OF TEMPERATURE -20°C...+85°C / OPTIONAL -40°C + 100°C POWER SUPPLY 5V / 11..30V / OPTIONAL 5..24V





INCREMENTAL ENCODERS

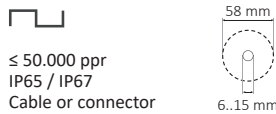
HOLLOW SHAFT



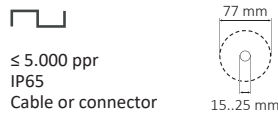
SERIE 59 / 59A / 59S



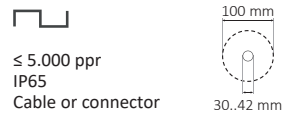
SERIE 19 / 19A



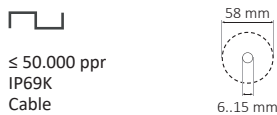
SERIE 77



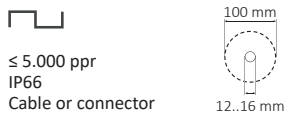
SERIE 80



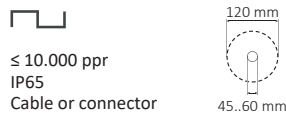
SERIE 19K



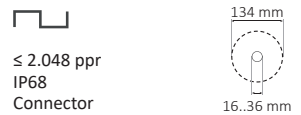
SERIE 100H / 100H DUO



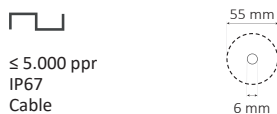
SERIE 120



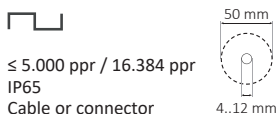
SERIE 130M



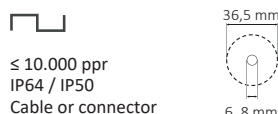
SERIE 50HI INOX



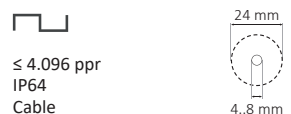
SERIE 50H / 50HC



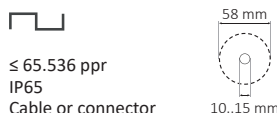
SERIE 22 / 22H



SERIE 28



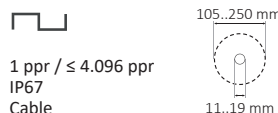
SERIE PR90H



SERIE MIE



SERIE MR / MRH



SERIE 22M



● HIGH RESOLUTION

● HIGH-SHAFT LOAD CAPACITY

● RESISTANT & ROBUST

● COMPACT & MINIATURE

● PROGRAMMABLE

● MAGNETIC

ABSOLUTE ENCODERS

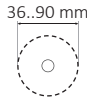


SINGLETURN & MULTITURN

SSI ABSOLUTE ENCODERS



- > Singleturn resolution up to 21 bits
- > Multiturn resolution up to 24 bits
- > Solid, blind hollow or hollow shaft
- > Binary, Gray codes. Configurable via cable or switch
- > Protection up to IP67. Cable or connector output

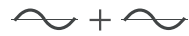


SERIE E36/E58 SSI

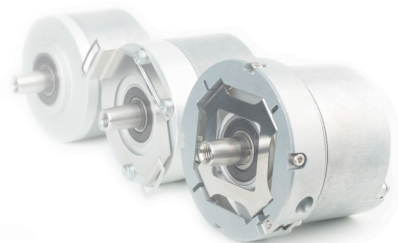
- Singleturn ≤ 13 bits
- Multiturn ≤ 24 bits
- Protection up to IP65
- Connection by cable or connector



ABSOLUTE + INCREMENTAL ENCODERS



- > Singleturn resolution up to 19 bits
- > Incremental resolution 2.048 SIN/COS
- > BISS-C or SSI + SIN/COS or SIN/COS + SIN/COS
- > Solid, conical, blind hollow or hollow shaft
- > Protection up to IP65. Cable or connector output



ANALOG ABSOLUTE ENCODERS

- > Analogical output 4..20mA, 0..20mA, 0..10V or 0..5V
- > Singleturn or multiturn, up to 16 bits resolution
- > Solid, blind hollow or hollow shaft
- > Configurable option of measuring range, reset or direction
- > Protection up to IP67. Cable or connector output



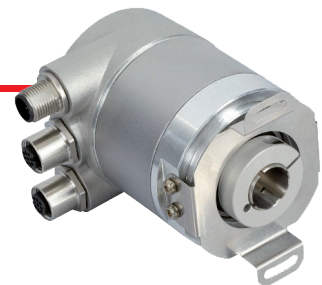
PARALLEL ABSOLUTE ENCODERS

- > Singleturn or multiturn
- > Solid or hollow shaft
- > Configurable: reset or direction
- > Protection up to IP67. Cable or connector output



ABSOLUTE ENCODERS FIELDBUS

- > Hohner Automation is offering all the Fieldbus encoders, Profibus, Profinet, Devicenet, CanOpen, CANlift, EtherCAT, EtherNet/IP, Interbus, Modbus/TCP, TCP/IP, Powerlink



ACCESSORIES

- > Flexible couplings
- > Coupling flanges
- > Mounting bells
- > Connectors
- > Measuring wheels
- > Antirotation systems
- > Pre-assembled cables
- > Support angles

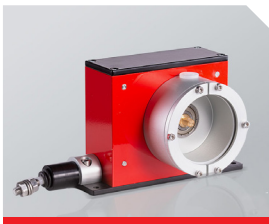




DRAW WIRE SYSTEMS



LINEAR MEASUREMENT



SERIE EM4 / 8 / 10

≤ 4 m / 8 m / 10 m
≤ 1 m/s / 0,75 m/s
200 / 250 / 300 mm ±0,06 turn



SERIE XT12 / 18

≤ 15 m / 50 m
≤ 10 m/s
300 mm / 500 mm turn



SERIE XS1 INC / ANA

Incremental / Analog Output

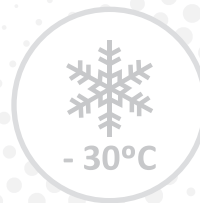
≤ 1,25 m
≤ 10 ppr/mm / ≤ 16 bits
≤ 1 m/s



SERIE XQ SSI / PAR

Analog / Parallel Output

≤ 2,3 m
≤ 10 ppr/mm
≤ 1 m/s



Draw wire systems allow to operate a rotary sensor of any type, for the measurement of linear distances:

+ Incremental Optical Encoder

+ Multiturn Absolute Optical Encoder

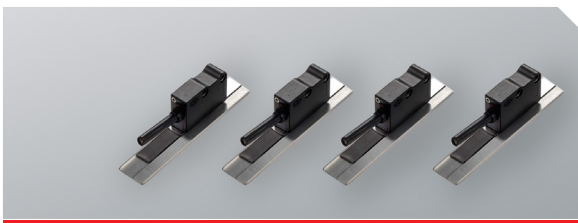
+ Multiturn Absolute Magnetic Encoder

+ Potentiometer



MAGNETIC SENSOR SYSTEMS

LINEAR MEASUREMENT



SERIE	MSL	MSM	MSH	MSV
	Incremental	Incremental	Incremental	SIN/COS
Accuracy	± 50 µm	± 8 µm	± 6 µm	± 8 µm
Pole pitch	5+5	2+2	1+1	2+2
Resolution*	100 µm	10 µm	5 µm	0.5 µm
Protection	IP67	IP67	IP67	IP67



SERIE VIMS

Accuracy	Incremental
Pole pitch	± 20 µm
Resolution	2+2
Protection	Programmable IP67 / IP43



SERIE MSA

Accuracy	Absolute
Pole pitch	± 15 µm
Resolution	2+2
Protection	10 µm IP67

(*) Other resolutions available, upon request.

With more than 40 years of experience, HOHNER AUTOMATION, the sole spanish optical encoders manufacturer, from its headquarter based in Breda (Girona province), designs, manufactures, commercialize and supports its customers in the development of industrial automation projects.

Our own departments of optical, mechanical and electronic manufacturing allow us to offer to our customers free engineering services with maximum efficacy and fast delivery time.

It is our flexibility and adaptability, coupled with our ethos of engineering, manufacturing excellence and quality concern, which has placed HOHNER AUTOMATION at the forefront of the best encoders manufacturers in the world.



BARCELONA | FRANKFURT | PARIS | SHENZHEN

Tel. (00 34) 972 160 017
info@encoderhohner.com
www.encoderhohner.com

your encoder experts