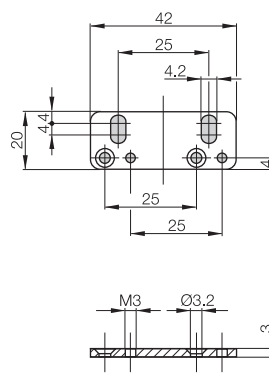
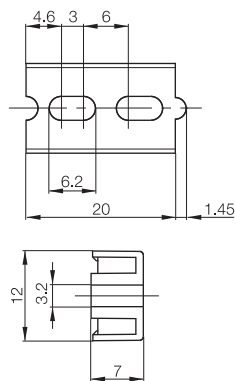


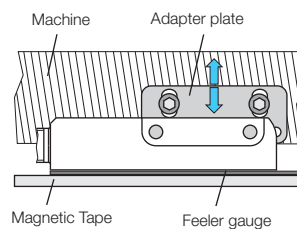


Accessories	Limit switch magnet	Adapter plate	Cover strip by the roll
Ordering code	BAM0138	BAM011W	
Part number	BML-Z0002	BML-Z0005	BML-A013-T_ _ _ _
	for S1A...	for S1A...	



The adapter plate allows you to set the vertical distance from the tape. It can be attached on the left or right of the sensor head.

Installation example



You may cover the magnetic tape with a stainless steel cover strip to protect it from damage caused by chips or chemicals. Note that the permissible air gap between the sensor head and tape is reduced by the thickness of the cover strip with adhesive film (0.15 mm).

Delivery variations:
Cover strip and magnetic tape can be ordered together in matching lengths (see order code for tape).

Cover strip by the roll can be ordered in 4 defined lengths.

Ordering example:

BML-A013-T_ _ _ _

Length

0500	5 m
1000	10 m
2400	24 m
4800	48 m

For detailed technical description and installation instructions, see user's guide at www.balluff.com