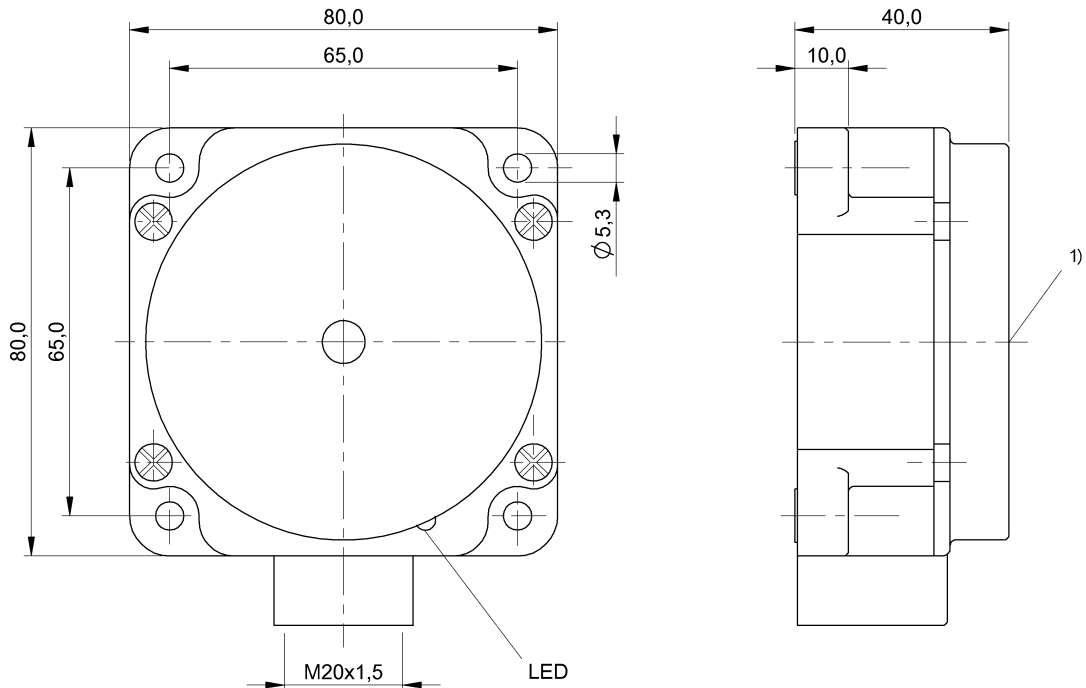


BES 517-224-M4-E
Ordering code: BES024E

Inductive sensor
80x40x80 mm

UC (AC/DC)
NO/NC
Sn = 40 mm
Non embeddable

BALLUFF
sensors worldwide



Characteristic data

Eff. switching distance S_r	40 mm
Tolerance S_r	$\pm 10\%$
Assured operating distance S_a	32 mm
Hysteresis H max. (in % of S_r)	20 %
Repeat accur. R max. (% of S_r)	5 %
Ambient temperature	-25...70 °C
Temp. drift max. (% of S_r)	10%
Switching freq. f max.	10 Hz
Ready delay t_v max.	200 ms
Utilisation category	AC 140 / DC 13
Function indicator	Yes
Power-on indicator	No
Short-circuit protected	Yes
Degree of protection as per IEC 60529	IP67
Protection class	II
Protected against polarity reversal	Yes

Electrical data

Operating voltage	
Effective operating voltage U_e AC	
Voltage drop dynamic max.	7,5 V
Voltage drop static max.	11 V
Rated insulation voltage U_i	250 AC V
Effective operating current I_e	250 mA
Off-state current I_r max.	1700 μ A

Minimum operating current I_m	5 mA
Short-time load cap./duration I_k/T	1.0 A/20 ms
Short-time cur. load cap. Freq	1 Hz
Rated frequency, AC	50/60/DC
Rated short circuit current	100 A
Principle of operation	Inductive

Mechanical data

Housing material	PBT
Sensing surface material	PBT
Wire cross-section max.	2.5 mm ²
Tightening torque for clamping	0,8 Nm
Connection type	Screw terminal
Shock rating	Shock, half-sinus, 30 gn, 11ms
Vibration rating	55 Hz, 1 mm ampl., 3x30 min
Degree of contamination	3
Cable gland thread size.	M20x1.5

Basic data

Basic standard	IEC 60947-5-2
----------------	---------------

Remarks

When the overload is removed, interrupt supply voltage U_b for approx. 2 sec.
 Internal switch for programming switching function: Position 1: NO (default); Position 2: NC.

BES 517-224-M4-E
Ordering code: BES024E

Inductive sensor
80x40x80 mm

UC (AC/DC)
NO/NC
Sn = 40 mm
Non embeddable

BALLUFF
sensors worldwide



Definitions see main catalog

subject to change

