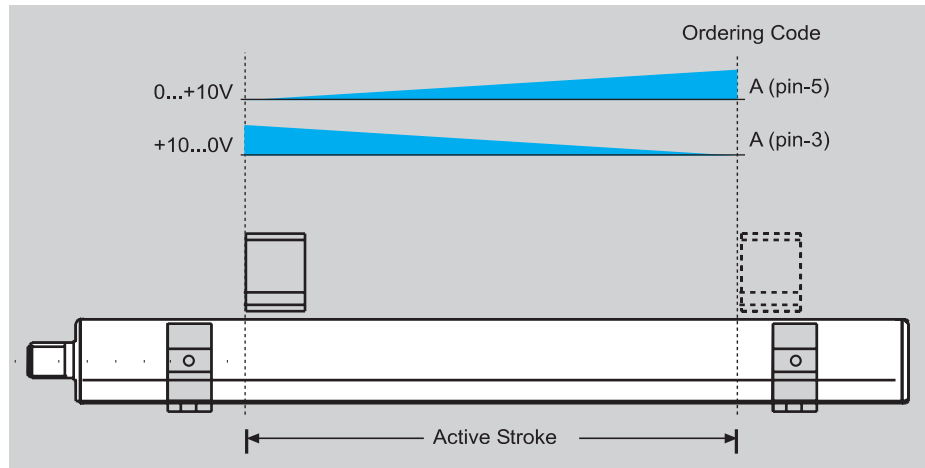


Series	BTL6 Profile A1
Output Signal	Analog Voltage
Transducer Interface	A



Ordering Code	BTL6-A110-M_ _ _ _-A1-S115
----------------------	-----------------------------------

Output Voltage	0...10 V and 10...0 V
Load Current	max. 5 mA
max. Ripple	≤ 5 mV
System Resolution	≤ 10 μm
Repeatability	≤ 10 μm
Repeat Accuracy	≤ 20 μm
Sampling Rate	STANDARD = 1 kHz
Non-linearity	≤ ±200 μm to 500 mm nominal stroke typ. ±0.02 %, max. ±0.04 % 508...1524 mm nominal stroke
Supply Voltage	20...28 Vdc
Current Draw	≤ 70 mA
Polarity Reversal Protected	yes
Operating Temperature	0 to +158 °F
Storage Temperature	-40 to +212 °F

Pin Assignments	Pin	Color	BTL6-A110...
Output Signals	1	YE	Analog common (falling)
	2	GY	Analog common (rising)
	3	PK	10...0 V output
	4	RD	Not used—No connection
	5	GN	0... 10 V output
Supply Voltage	6	BU	GND
	7	BN	+24 Vdc
	8	WH	Not used—No connection

Connect shield to housing,
pins 4 and 8 must remain unconnected.

Please enter length for nominal
stroke in ordering code.

- Included:
- Transducer
 - User's guide

- Please order separately:
- Magnets pg 100
 - Mounting clamps/cuff pg 100
 - Connectors pg 101

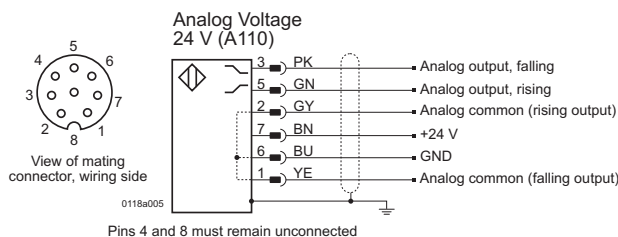
Ordering example:

BTL6-A110-M_ _ _ _-A1-S115

Metric to Inch Conversion:
inches = mm/25.4

**Standard
nominal strokes [mm]**

- 0102, 0127, 0152, 0178,
- 0203, 0230, 0254, 0280,
- 0305, 0330, 0381, 0407,
- 0457, 0508, 0533, 0560,
- 0610, 0661, 0711, 0762,
- 0813, 0914, 1016, 1067,
- 1220, 1270, 1372, 1524



Description	Magnet	Magnet
Series	BTL6 Profile A1	BTL6 Profile A1
	<p>Cost Effective</p> <p>Lateral offset: C = ±2 mm Vertical distance of magnet: D = 4...8 mm</p>	<p>Lateral offset: C = ±2 mm Vertical distance of magnet: D = 4...8 mm</p>
Ordering Code	BTL6-A-3801-2	BTL6-A-3800-2
Housing Material	Plastic	Plastic
Weight	ca. 25 g	ca. 30 g
Magnet Traverse Speed	any	any
Operating Temperature/Storage Temperature	-40...+85 °C	-40...+85 °C
Included	Magnet	Magnet

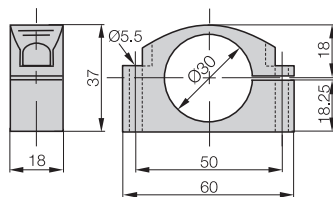
The BTL6-A-3800-2 magnet can be operated at a distance of 4...8 mm from the top surface of the profile housing.

This means that both families of transducers can be interchanged without making any mechanical modifications.

Together with mounting clamps BTL6-A-MF01-A-50 or mounting cuff BTL6-A-MF03-K-50 the mechanical installation is compatible to series BTL5-...-P-S 32 with magnets BTL5-P-3800-2 or BTL5-P-5500-2 on page 71-72.

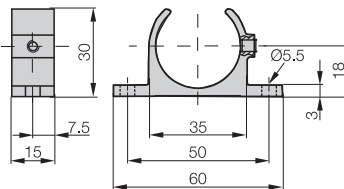


Mounting clamps/cuff

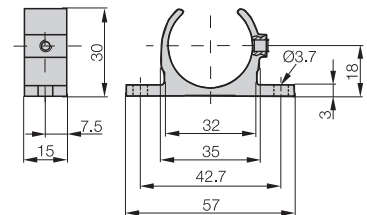


Cost Effective

Mounting cuff
Ordering code: **BTL6-A-MF03-K-50**
Includes: 1 cuff



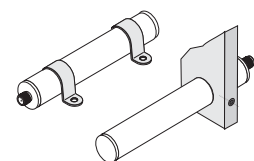
Mounting clamp
Ordering code: **BTL6-A-MF01-A-50**
Includes: 1 clamp



Mounting clamp
Ordering code: **BTL6-A-MF01-A-43**
Includes: 1 clamp

When extreme shock and vibration are present, we recommend spacing mounting clamps every 250 mm.

Length (stroke length)	No. of mounting clamps/cuffs
up to 250 mm	2
251 to 500 mm	3
501 to 750 mm	4
751 to 1000 mm	5
1001 to 1250 mm	6
1251 to 1500 mm	7

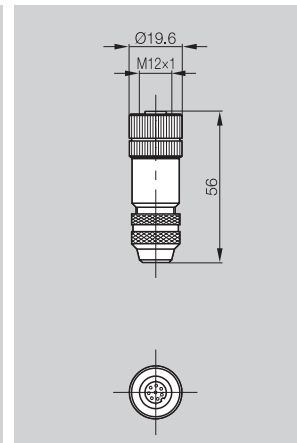
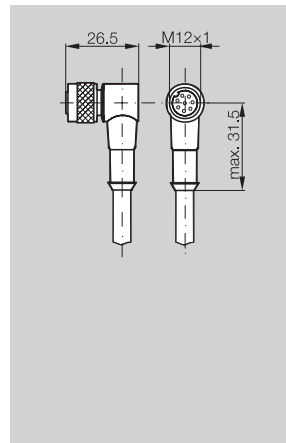
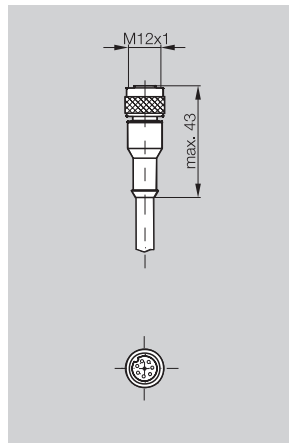


Custom mounting options

Micropulse AT Style

Connectors Profile Series A1

Connectors for Series	BKS-S115-PU-_-_- BTL6-_-_-S115	BKS-S116-PU-_-_- BTL6-_-_-S115	BKS-S115-00 BTL6-_-_-S115
Type	8-pin, Straight, female	8-pin, Right angle, female	8-pin, female



Ordering Code	BKS-S115-PU-_-_-	BKS-S116-PU-_-_-	BKS-S115-00
Screw Terminal			max. 0.75 mm ²
Housing Material	PUR	PUR	CuZn nickel plated
Contacts	CuZn	CuZn	CuZn
Contact Finish	0.8 µm Au	0.8 µm Au	
Cable Strain Relief			PG 9
Accepts Cable Diameter			6...8 mm
Enclosure Rating per IEC 60529	IP 67	IP 67	IP 67 (when attached)
Knurled Coupling Ring	CuZn	CuZn	
Finish	2.5 µm Ni	2.5 µm Ni	
O-ring	Viton	Viton	Viton
Cable	Molded-on PUR		
No. of Wires × Conductor Cross Section	8 × 0.25 mm ² + braided shield		
Type	LIYY-CF11Y		
Conductor Configuration	14 × 0,15 mm		
Outer Diameter	6,6 ±0,2 mm		
Min. Bending Radius	dynamic 4 × D, static 3 × D		

Please indicate cable length in ordering code

02 = Length 2 m; 05 = Length 5 m;
10 = Length 10 m; 15 = Length 15 m;
20 = Length 20 m; 25 = Length 25 m

Pin assignments	Pin	Color
	1	YE
	2	GY
	3	PK
	4	RD
	5	GN
	6	BU
	7	BN
	8	WH

View of female

BTL AT

