

UNI FLANSCH™ – Dichteinsätze

UNI Flange® – Sealing inserts

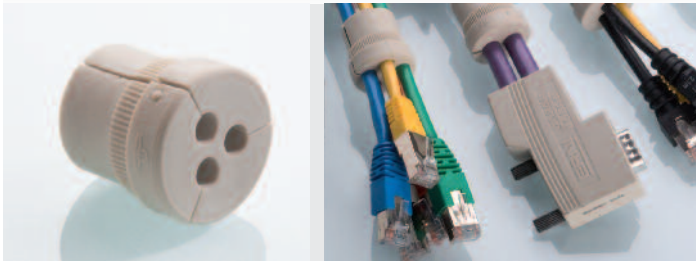


Abb. 1: UNI Dicht®-Einsatz Mehrfach – geschlitzt
Fig. 1: UNI Dicht® insert multiple – slotted


Abb. 2: UNI Dicht®-Einsatz Mehrfach – Montagebeispiel
Fig. 2: UNI Dicht® insert multiple – assembly example

Geschlitzt TPE-V

Slotted
TPE-V

UNI Dicht®-Einsatz Standard geschlitzt

UNI Dicht® insert standard slotted

| Artikel-Nummer Art.-No. | Dichtbereich Sealing range |  |
|----------------------------|-------------------------------|---|
| UFE 54p11 | 10,5 – 7,0 | 25 |
| UFE 54p13 | 13,0 – 9,0 | 25 |
| UFE 54p16 | 15,5 – 11,5 | 25 |
| UFE 54p18 | 18,0 – 14,0 | 25 |
| UFE 54p20 | 20,5 – 17,0 | 25 |


UNI Dicht®-Einsatz geschlossen

UNI Dicht® insert closed

| Artikel-Nummer Art.-No. |  |
|----------------------------|---|
| UFE 54pg | 25 |

UNI Dicht®-Einsatz Mehrfach geschlitzt

UNI Dicht® insert multiple slotted


| Artikel-Nummer Art.-No. |  |
|-------------------------------------|---|
| UFE 54pm1x2,9/2x6/1x6,1/1x6,8/1x7,3 | 25 |
| UFE 54pm1x3/1x3S/2x5/2x5S | 25 |
| UFE 54pm1x3,2/2x5/1x6S | 25 |
| UFE 54pm1x3,2S/2x5S/1x8,5S | 25 |
| UFE 54pm1x3,2/2x6/1x6,1/1x6,8/1x7,3 | 25 |
| UFE 54pm1x3,2/2x6/3x7 | 25 |
| UFE 54pm1x4/1x5/1x13 | 25 |
| UFE 54pm1x4,3/1x6/1x8 | 25 |
| UFE 54pm1x4,5/2x7/1x8 | 25 |
| UFE 54pm1x4,5/2x8 | 25 |
| UFE 54pm1x5/1x9 | 25 |
| UFE 54pm1x5,7/2x6,3/1x8,5 | 25 |
| UFE 54pm1x5,7/1x13 | 25 |
| UFE 54pm1x6/2x9 | 25 |
| UFE 54pm1x6,5/1x12 | 25 |
| UFE 54pm1x7 | 25 |
| UFE 54pm1x7/1x8,5 | 25 |
| UFE 54pm1x7/1x10,5 | 25 |
| UFE 54pm1x8,5/1x12 | 25 |
| UFE 54pm2x4,5 | 25 |
| UFE 54pm2x4,5/1,13 | 25 |
| UFE 54pm2x6/2x8 | 25 |
| UFE 54pm2x7/3x7S | 25 |
| UFE 54pm2x7,2/1x10,5 | 25 |
| UFE 54pm2x8 | 25 |
| UFE 54pm2x9 | 25 |
| UFE 54pm3x4 | 25 |
| UFE 54pm3x5 | 25 |

Dichteinsatz

Sealing insert

| Werkstoff Material | Temperaturbereich min./max Temperature range min./max. |
|-----------------------|---|
| TPE-V | -20 °C / +80 °C |
| TPE-V | -20 °C / +80 °C |

 Dichteinsätze werden in geschlitzter Variante geliefert.
Sealing inserts deliverable in slotted variants.


 Nicht belegte Bohrungen eines Mehrfach-Dichteinsatzes müssen mit Verschlussbolzen belegt werden. Nähere Informationen finden Sie in unserem Hauptkatalog (Kapitel Zubehör).

Non-assigned holes of multiple sealing inserts must be assigned with sealing plugs. Further information can be found in our main catalogue (chapter accessories).



UNI Dicht®-Einsatz Mehrfach geschlitzt

UNI Dicht® insert multiple slotted

| Artikel-Nummer Art.-No. |  |
|----------------------------|---|
| UFE 54pm3x6/1x8 | 25 |
| UFE 54pm3x6/2x8 | 25 |
| UFE 54pm3x7 | 25 |
| UFE 54pm3x9 | 25 |
| UFE 54pm4x5 | 25 |
| UFE 54pm4x5/4x5S | 25 |
| UFE 54pm4x6 | 25 |
| UFE 54pm4x6/3x6S | 25 |
| UFE 54pm4x6/1x8 | 25 |
| UFE 54pm4x6,5 | 25 |
| UFE 54pm4x6,5/1x6,5S | 25 |
| UFE 54pm4x8 | 25 |
| UFE 54pm5x4 | 25 |
| UFE 54pm5x5 | 25 |
| UFE 54pm5x6 | 25 |
| UFE 54pm6x4 | 25 |
| UFE 54pm6x4/1x7 | 25 |
| UFE 54pm6x5 | 25 |
| UFE 54pm6x5,5 | 25 |
| UFE 54pm6x6,5 | 25 |
| UFE 54pm8x3 | 25 |
| UFE 54pm8x4 | 25 |
| UFE 54pm8x4/1x4SB | 25 |
| UFE 54pm8x5 | 25 |
| UFE 54pm8x5,5 | 25 |
| UFE 54pm9x3 | 25 |
| UFE 54pm21x2 | 25 |