

Accessori TWS - MINI TWS - BABY TWS

Accessories TWS - MINI TWS - BABY TWS

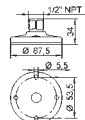
BASETTA - con O-Ring e guarnizione di base
 FOOT - with O-Ring and base gasket



PA

TWS BS

TWSBS ■ 27760
 NTWSBS ■ 27691



Kg. 0,03

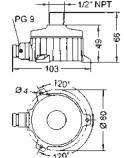
BOX DI GIUNZIONE
 JUNCTION BOX



PA

TWS BOX PG9

TWSBOXPG9 ■ 27777
 NTWSBOXPG9 ■ 27778



Kg. 0,1

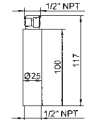
PROLUNGA - (h. 10 cm. - sovrapponibile) - con O-Ring e due guance a scatto amovibili (max. 2 pezzi)
 EXTENSION STEM (h. 10 cm. - stackable) - with O-Ring and two removable snap-shut stoppers (2 pcs max.)



PA

TWS PR

TWSPR ■ 27761
 NTWSPR ■ 27692



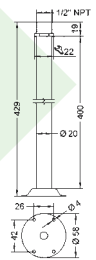
Kg. 0,03

PROLUNGA ACCIAIO INOX (h. 400 mm) - con O-Ring
 STAINLESS STEEL EXTENSION STEM (h. 400 mm) with O-Ring



TWS KIT INOX L/400

TWSKITINOXL400 ■ 27767



Kg. 0,28

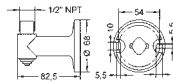
BASE A PARETE 1 FILETTO - con O-Ring e guarnizione di base
 1 THREAD WALL SUPPORT - with O-Ring and base gasket



PA

TWS BP 1

TWSBP1 ■ 27762
 NTWSBP1 ■ 27693



Kg. 0,04

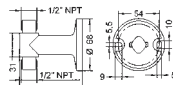
BASE A PARETE 2 FILETTI - con O-Ring e guarnizione di base
 2 THREAD WALL SUPPORT - with O-Ring and base gasket



PA

TWS BP 2

TWSBP2 ■ 27763
 NTWSBP2 ■ 27694



Kg. 0,05

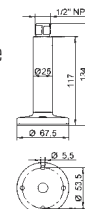
1 PR + 1 BS - con O-Ring, guarnizione di base e due guance a scatto amovibili
 1 PR + 1 BS - with O-Ring, base gasket and two removable snap-shut stoppers



PA

TWS KIT

TWSKIT ■ 27764
 NTWSKIT ■ 27695



Kg. 0,06

PROLUNGA ACCIAIO INOX (h. 200 mm) - con O-Ring
 STAINLESS STEEL EXTENSION STEM (h. 200 mm) with O-Ring



TWS KIT INOX L/200

TWSKITINOXL200 ■ 27766



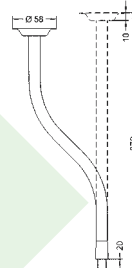
Kg. 0,18

PROLUNGA FLESSIBILE ACCIAIO
 FLEXIBLE STEEL EXTENSION STEM



N TWS PF2

NTWSPF2 ■ 27696



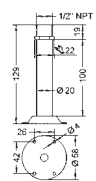
Kg. 0,26

PROLUNGA ACCIAIO INOX (h. 100 mm) - con O-Ring
 STAINLESS STEEL EXTENSION STEM (h. 100 mm) with O-Ring



TWS KIT INOX L/100

TWSKITINOXL100 ■ 27765



Kg. 0,14

Linea colonne luminose . Luminous towers range