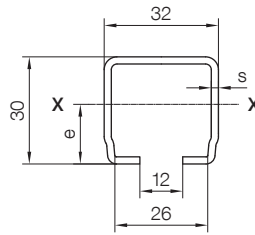


C-Rails and Accessories Program 0230

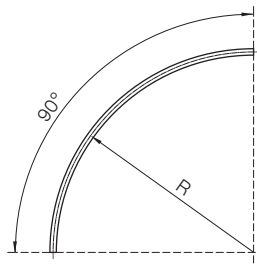
C-Rails



Catalog-No.	Material	Length [mm]	Thickness s [mm]	I_x [cm ⁴]	Static Values		Weight [kg/m]				
					W_x [cm ³]	e [mm]					
023200-6	sendzimir galvanized steel	6000	2	2.42	1.45	16.70	1.56				
023200-4		4000									
023201-6		6000	1.5					1.90	1.10	17.10	1.17
023201-4		4000									
023404-6	stainless steel V2A 1.4301	6000	2	2.42	1.45	16.70	1.56				
023404-4		4000									
023400-6	stainless steel V4A 1.4571	6000	2					2.42	1.45	16.70	1.56
023400-4		4000									

Other lengths on request

90° - Curves



Catalog-No.	Material	R [mm]	Developed Length [mm]	Loop Depth max. 0.35 x R [mm]	for max. Trolley Length [mm]	Weight [kg]
023203-01200	1200	1885	420	160	2.9	
023203-01400	1400	2200	490	200	3.4	
023203-01600	1600	2510	560	200	3.9	
023203-01800	1800	2830	630	250	4.4	
023203-02000	2000	3140	700	250	4.9	
023405-01000	stainless steel V2A 1.4301	1000	1570	350	160	2.4
023405-01200		1200	1885	420	160	2.9
023405-01400		1400	2200	490	200	3.4
023405-01600		1600	2510	560	200	3.9
023405-01800		1800	2830	630	250	4.4
023405-02000		2000	3140	700	250	4.9
023403-01000	stainless steel V4A 1.4571	1000	1570	350	160	2.4
023403-01200		1200	1885	420	160	2.9
023403-01400		1400	2200	490	200	3.4
023403-01600		1600	2510	560	200	3.9
023403-01800		1800	2830	630	250	4.4
023403-02000		2000	3140	700	250	4.9

Other curves on request