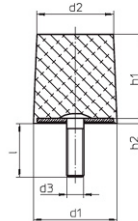


Rubber stop buffer

TDB0170-0001a-E

Buffers for end stops / cranes and conveyor systems

5.5 Conical rubber buffers with threaded bolts



Catalog No.	W _{max} [J]	F [kN]	Weight [kg]	d ₁ [mm]	d ₂ [mm]	d ₃ [mm]	h ₁ [mm]	h ₂ [mm]	l [mm]	PE ¹⁾ [pc.]	LZ ²⁾
017220-016X006,3	1.2	0.9	0.008	16	15.5	M5	6.3	0.5	20	1	L
017220-016X008	1.5	0.9	0.009		15.0		8			125	4
017220-016X010	1.8	0.9	0.010		15.0		10			1	L
017220-016X012,5	2.2	0.9	0.011		14.5		12.5			125	4
017220-016X016	2.8	0.9	0.012		14.0		16			1	L
017220-020X008	2.5	1.8	0.013	20	19.5	M6	8	0.6	25	1	L
017220-020X010	3.0	1.65	0.016		19.0		10			100	4
017220-020X012,5	3.8	1.5	0.019		18.5		12.5			1	L
017220-020X016	4.8	1.4	0.021		18.0		16			100	4
017220-020X020	6.0	1.35	0.023		17.5		20			1	L
017220-025X010	7.0	4.6	0.025	25	24.0	M6	10	0.6	25	1	L
017220-025X012,5	8.0	4.0	0.027		23.5		12.5			100	4
017220-025X016	10.0	3.5	0.029		23.0		16			1	L
017220-025X020	12.0	3.2	0.031		22.5		20			100	4
017220-025X025	15.0	3.0	0.034		22.0		25			1	L
017220-032X012,5	22.5	12.5	0.046	32	31.5	M8	12.5	2.3	28	100	4
017220-032X016	23.0	88	0.049		30.0		16			100	4
017220-032X020	24.0	7.0	0.053		29.5		20			1	L
017220-032X025	25.5	5.8	0.057		29.0		25			100	4
017220-032X032	27.5	5.0	0.064		28.5		32			1	L
017220-040X016	51.0	17.5	0.069	40	38.0	M8	16	2.8	28	1	L
017220-040X020	53.0	13.5	0.075		37.5		20			100	4
017220-040X025	55.0	11.0	0.082		37.0		25			100	4
017220-040X032	57.5	9.0	0.090		36.5		32			1	L
017220-040X040	60.0	7.5	0.100		36.0		40			1	L
017220-050X020	70.0	22.5	0.121	50	47.5	M10	20	3.0	32	50	L
017220-050X025	75.0	18.0	0.131		47.0		25			50	4
017220-050X032	80.0	15.0	0.145		46.5		32			1	L
017220-050X040	90.0	13.0	0.160		46.0		40			1	L
017220-050X050	100.0	11.0	0.179		45.5		50			50	4
017220-063X020	150.0	40.0	0.202	63	60.5	M10	20	4.0	31	1	L
017220-063X025	160.0	37.0	0.218		60.0		25			25	4
017220-063X032	170.0	32.5	0.241		59.5		32			1	L
017220-063X040	180.0	28.5	0.266		59.0		40			25	4
017220-063X050	200.0	25.0	0.297		57.5		50			1	L
017220-063X063	220.0	21.0	0.337	56.0	63	25	4				

1) = packing unit = minimum order quantity

2) = delivery time; L = on stock, 1 = one week, 2 = two weeks, a.s.o.

Rubber stop buffer

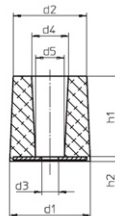
TDB0170-0001a-E

Buffers for end stops / cranes and conveyor systems

Catalog No.	W _{max} [J]	F [kN]	Weight [kg]	d ₁ [mm]	d ₂ [mm]	d ₃ [mm]	h ₁ [mm]	H ₂ [mm]	l [mm]	PE ¹⁾ [pc.]	LZ ²⁾
017220-080X020	255.0	85.0	0.331	80	77.5	M12	20	4,2	36	1	L
017220-080X025	275.0	70.0	0.358		77.0		25			4	
017220-080X032	290.0	58.5	0.396		76.5		32			4	
017220-080X040	320.0	50.0	0.437		76.0		40			L	
017220-080X050	350.0	42.0	0.490		74.5		50			4	
017220-080X063	390.0	34.0	0.556		73.0		63			4	
017220-080X080	450.0	27.5	0.643		71.5		80			L	
017220-100X020	370.0	150.0	0.506	100	97.5	M12	20	5,2	35	1	L
017220-100X025	400.0	90.0	0.549		97.0		25			4	
017220-100X032	425.0	75.0	0.609		96.5		32			4	
017220-100X040	470.0	65.0	0.676		96.0		40			4	
017220-100X050	510.0	57.5	0.760		94.5		50			L	
017220-100X063	580.0	50.0	0.867		93.0		63			4	
017220-100X080	650.0	45.0	1.007		91.5		80			4	
017220-100X100	750.0	40.0	1.168		90.0		100			L	

Tolerances of the rubber parts according to ISO 3302-1M3

5.6 Conical rubber buffers with fixing hole



Catalog No.	W _{max} [J]	F [kN]	Weight [kg]	d ₁ [mm]	d ₂ [mm]	d ₃ [mm]	D ₄ [mm]	d ₅ [mm]	h ₁ [mm]	h ₂ [mm]	PE ¹⁾ [pc.]	LZ ²⁾
017230-016X008	0.9	0.6	0.004	16	15.0	∅	10.0	9	8	2,0	1	L
017230-016X010	1.0	0.5	0.005		15.0		10.0		100		4	
017230-016X012,5	1.1	0.4	0.005		14.5		10.5		100		4	
017230-016X016	1.25	0.38	0.006		14.0		11.0		1		L	
017230-020X010	1.6	1.1	0.008	20	19.0	∅	12.0	11	10	2,1	1	L
017230-020X012,5	1.7	0.8	0.008		18.5		12.5		100		4	
017230-020X016	1.8	0.5	0.009		18.0		13.0		100		4	
017230-020X020	1.9	0.3	0.010		17.5		13.5		20		L	
017230-025X010	5.9	4.5	0.014	25	24.0	∅	12.0	11	10	2,1	100	4
017230-025X012,5	6.1	3.2	0.015		23.5		12.5		100		4	
017230-025X016	6.5	2.1	0.017		23.0		13.0		16		100	4
017230-025X020	7.0	1.6	0.019		22.5		13.5		20		100	4
017230-025X025	7.8	1.3	0.021		22.0		14.0		25		L	
017230-032X012,5	13.0	6.5	0.023		32		31.5		∅		15.5	14
017230-032X016	13.5	4.4	0.025	30.0		16.0	100	4				
017230-032X020	14.0	3.1	0.028	29.5		16.5	20	100		4		
017230-032X025	14.5	2.5	0.032	29.0		17.0	25	100		4		
017230-032X032	15.0	2.0	0.037	28.5		17.5	32	L				

1) = packing unit = minimum order quantity

2) = delivery time; L = on stock, 1 = one week, 2 = two weeks, a.s.o.

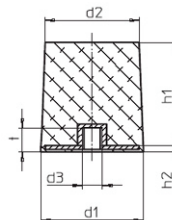
Rubber stop buffer

TDB0170-0001a-E

Buffers for end stops / cranes and conveyor systems

Catalog No.	W _{max} [J]	F [kN]	Weight [kg]	d ₁ [mm]	d ₂ [mm]	d ₃ [mm]	d ₄ [mm]	d ₅ [mm]	h ₁	h ₂ [mm]	PE ¹⁾ [pc.]	LZ ²⁾
017230-040X016	34.0	14.0	0.046	40	38.0	∅ 9.4	16.0	14	16	2.8	100	4
017230-040X020	35.0	9.0	0.051		37.5		16.5		20			
017230-040X025	37.0	6.5	0.057		37.0		17.0		25			
017230-040X032	39.5	5.1	0.063		36.5		17.5		32			
017230-040X040	41.0	4.9	0.071		36.0		18.0		40			
017230-050X020	55.0	18.0	0.078	50	47.5	∅ 10.5	20.5	18	20	3.0	50	4
017230-050X025	58.0	14.0	0.086		47.0		21.0		25			
017230-050X032	62.0	11.0	0.097		46.5		21.5		32			
017230-050X040	67.0	8.0	0.109		46.0		22.0		40			
017230-050X050	72.0	7.5	0.124		45.5		22.5		50			
017230-063X025	110.0	23.0	0.173	63	60.0	∅ 10.5	21.0	18	25	4	25	4
017230-063X032	120.0	18.0	0.193		59.5		21.5		32			
017230-063X040	135.0	14.0	0.215		59.0		22.0		40			
017230-063X050	150.0	12.0	0.243		57.5		23.5		50			
017230-063X063	175.0	10.0	0.277		56.0		25.0		63			
017230-080X025	230.0	57.0	0.282	80	77.0	∅ 13.9	23.0	20	25	4.2	25	4
017230-080X032	245.0	44.0	0.317		76.5		23.5		32			
017230-080X040	265.0	35.0	0.355		76.0		24.0		40			
017230-080X050	285.0	29.0	0.402		74.5		25.5		50			
017230-080X063	315.0	24.0	0.459		73.0		27.0		63			
017230-080X080	350.0	20.0	0.536	71.5	28.5	80						
017230-100X020	360.0	130.0	0.433	100	97.5	∅ 13.9	22.5	20	20	5.2	10	4
017230-100X025	380.0	90.0	0.473		97.0		23.0		25			
017230-100X032	410.0	75.0	0.430		96.5		23.5		32			
017230-100X040	440.0	65.0	0.593		96.0		24.0		40			
017230-100X050	470.0	55.0	0.672		94.5		25.5		50			
017230-100X063	520.0	45.0	0.770		93.0		27.0		63			
017230-100X080	575.0	37.0	0.900		91.5		28.5		80			
017230-100X100	650.0	30.0	1.045		90.0		30.0		100			

5.7 Conical rubber buffers with internal thread



Catalog No.	W _{max} [J]	F [kN]	Weight [kg]	d ₁ [mm]	d ₂ [mm]	D ₃ [mm]	h ₁ [mm]	h ₂ [mm]	L [mm]	PE ¹⁾ [pc.]	LZ ²⁾
017240-020X012,5	3.8	1.5	0.015	20	18.5	M6	12.5	2.1	7.1	1	L
017240-020X016	4.8	1.4	0.016		18		16.0			100	4
017240-020X020	6.0	1.35	0.018		17.5		20.0			1	L
017240-025X12,5	8.0	4.0	0.023	25	23.5	M6	12.5	2.1	7.1	100	4
017240-025X016	10.0	3.5	0.025		23.0		16.0			100	4
017240-025X020	12.0	3.2	0.027		22.5		20.0			100	4
017240-025X025	15.0	3.0	0.030		22.0		25.0			1	L

1) = packing unit = minimum order quantity

2) = delivery time; L = on stock, 1 = one week, 2 = two weeks, a.s.o.

Rubber stop buffer

TDB0170-0001a-E

Buffers for end stops / cranes and conveyor systems

Catalog No.	W _{max} [J]	F [kN]	Weight [kg]	d ₁ [mm]	d ₂ [mm]	d ₃ [mm]	h ₁ [mm]	h ₂ [mm]	l [mm]	PE ¹⁾ [pc.]	LZ ²⁾
017240-032X016	23.0	8.8	0.039	32	30.0	M8	16.0	2.3	9.3	100	4
017240-032X020	24.0	7.0	0.043		29.5		20.0			100	4
017240-032X025	25.5	5.8	0.048		29.0		25.0			100	4
017240-032X032	27.5	5.0	0.054		28.5		32.0			1	L
017240-040X016	51.0	17.5	0.060	40	38.0	M8	16.0	2.8	9.3	1	L
017240-040X020	53.0	13.5	0.068		37.5		20.0			100	4
017240-040X025	55.0	11.0	0.073		37.0		25.0			100	4
017240-040X032	57.5	9.0	0.081		36.5		32.0			100	4
017240-040X040	60.0	7.5	0.091	50	36.0	M10	40.0	3.0	11.5	1	L
017240-050X020	70.0	22.5	0.104		47.5		20.0			50	4
017240-050X025	75.0	18.0	0.114		47.0		25.0			50	4
017240-050X032	80.0	15.0	0.127		46.5		32.0			50	4
017240-050X040	90.0	13.0	0.142	63	46.0	M10	40.0	4.0	11.5	50	4
017240-050X050	100.0	11.0	0.162		45.5		50.0			1	L
017240-063X020	150.0	40.0	0.183		60.5		20.0			25	4
017240-063X025	160.0	37.0	0.199		60.0		25.0			25	4
017240-063X032	170.0	32.5	0.222	80	59.5	M12	32.0	4.2	13.7	25	4
017240-063X040	180.0	28.5	0.247		59.0		40.0			25	4
017240-063X050	200.0	25.0	0.278		57.5		50.0			25	4
017240-063X063	220.0	21.0	0.317		56.0		63.0			1	L
017240-080X025	275.0	70.0	0.305	100	77.0	M12	25.0	5.2	13.7	25	4
017240-080X032	290.0	58.5	0.343		76.5		32.0			25	4
017240-080X040	320.0	50.0	0.385		76.0		40.0			25	4
017240-080X050	350.0	42.0	0.437		74.5		50.0			25	4
017240-080X063	390.0	34.0	0.503	100	73.0	M12	63.0	5.2	13.7	25	4
017240-080X080	450.0	27.5	0.590		71.5		80.0			1	L
017240-100X025	400.0	90.0	0.507		97.0		25.0			10	4
017240-100X032	425.0	75.0	0.567		96.5		32.0			10	4
017240-100X040	470.0	65.0	0.634	100	96.0	M12	40.0	5.2	13.7	10	4
017240-100X050	510.0	57.5	0.718		94.5		50.0			10	4
017240-100X063	580.0	50.0	0.825		93.0		63.0			10	4
017240-100X080	650.0	45.0	0.965		91.5		80.0			10	4
017240-100X100	750.0	40.0	1.126	100	90.0	M12	100.0	5.2	13.7	1	L

1) = packing unit = minimum order quantity

2) = delivery time; L = on stock, 1 = one week, 2 = two weeks, a.s.o.

6 Example of order details

